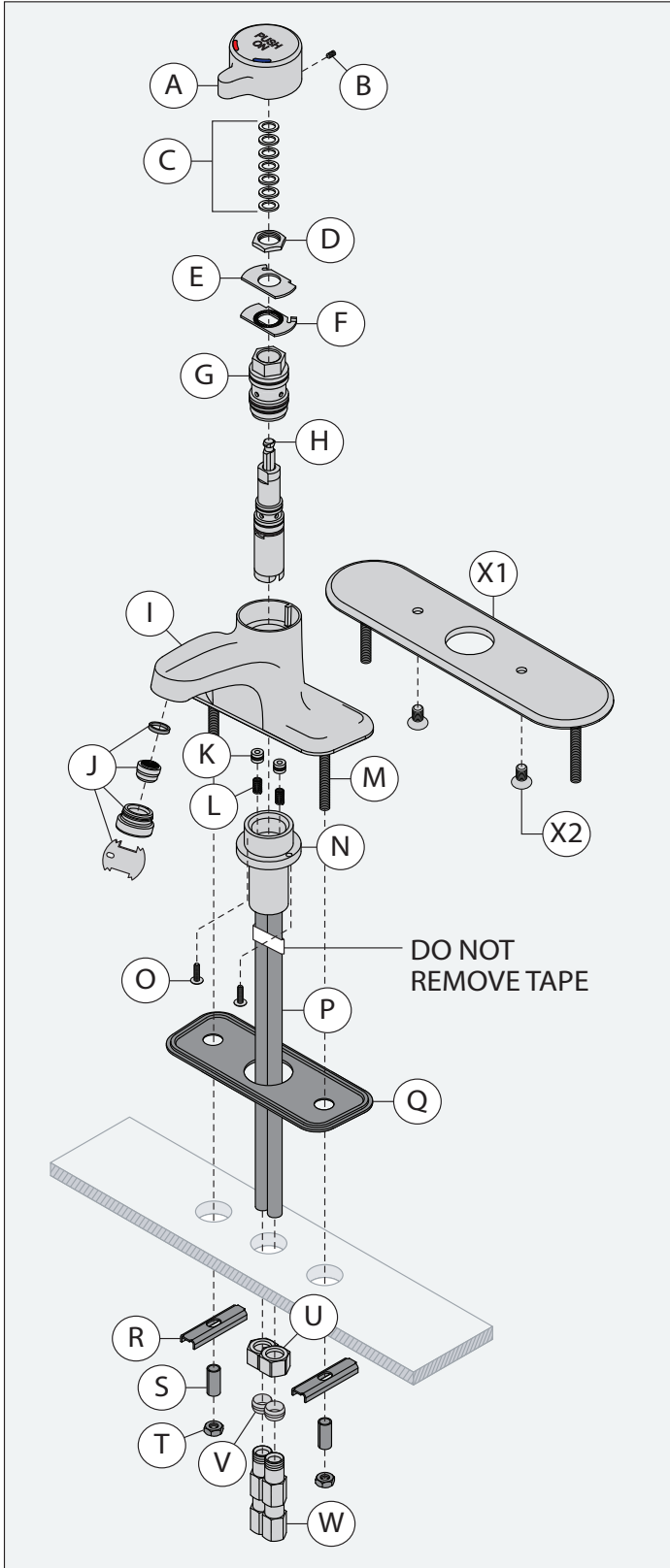
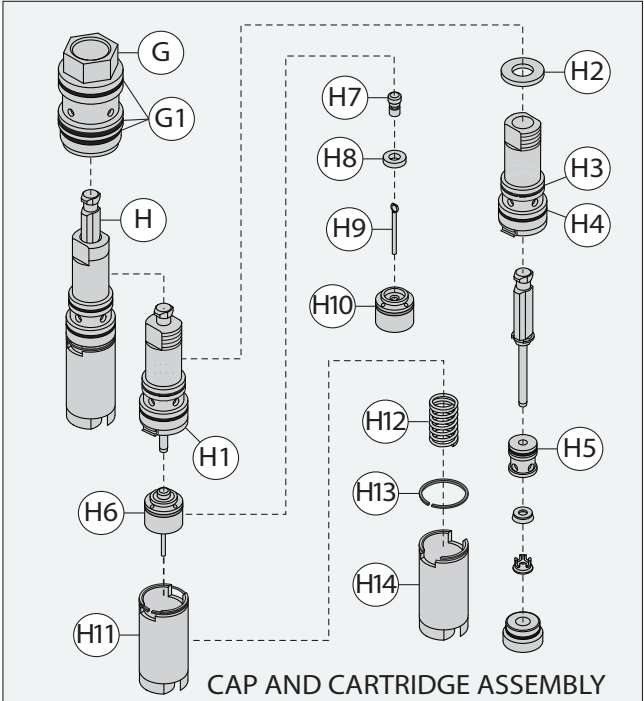


Parts Breakdown



Notes: 1) Apply plumber tape to all threaded connections.
2) Compression nuts (U) and ferrules (V) not included.



Replacement Parts		
Item	Description	Part Number
A	Handle	99714092
B	Set Screw	28108
B	Set Screw	28108
C	Cycle Timing Washers (7)	04167
D	Nut	
E	Limit Stop Washer	99635023
F	Limit Stop Washer, Fixed	
G	Upper Housing	28109
G1	Upper Housing O-rings (3)	00026
G1	Upper Housing O-rings (3)	
H3	Cartridge O-ring	99823198
H4	Cartridge O-ring	
H5	Guide O-ring	
H10	Piston Quadring	
H	Cartridge	36197
H	Quick Closing Cartridge	99180051
H1	Control Spindle Kit	28118
H6	Piston Assembly	
H2	Thrust Washer	28110
H6	Piston Assembly	99153560
H11	Piston Spring/Cylinder	99634913
J	0.5 gpm Vandal Resistant Aerator Kit with Key	99125077
K	Check Spring	99526992
L	Check Spring	
R	Mounting Bracket	99113102
S	Spacer	
T	Mounting Nut	
W	Check/Screen Assembly	99033101
X1, X2	8" Deck Plate Assembly	99906738

Troubleshooting Chart

Problem	Cause	Solution
Faucet runs too long or too short.	Cycle timing washers have not been adjusted.	Remove handle (A) then add cycle timing washers (C) to stem to shorten time or remove washers to lengthen time.
Faucet drips.	Seat washer worn or foreign matter (chips, dirt, solder, etc.) is between washer and seat surface.	Disassemble cartridge (H) and remove piston* (H6). Remove screw (H7) and clean seat washer (H8). Check control rod pin (H9) for burr then reassemble.
Faucet runs constantly.	Seat washer not closing on seat surface or seat washer and/or seat surface is worn.	Remove piston (H6) and spring** (H12). Check for burr on pin (H9) and check spring. Both piston and spring may have to be replaced. Excessive wear may require cartridge (H) replacement.
Water leaks from under handle.	Stem washers worn.	Remove cartridge (H) and replace with housing o-rings (G1). If leak persists replace control spindle kit (H1).
Faucet leaks on or under counter.	Supply housing o-rings worn.	Replace housing o-rings (G1).
Faucet bleeding between hot and cold.	LL-71B check/screens NOT installed.	Two chrome plated 3/8" check/screens are supplied with every faucet and MUST be installed.
Faucet bleeding between hot and cold.	LL-71B check/screens ARE installed.	Replace check springs (K,L).
Handle is loose.	Set screw has loosened.	Tighten set screw (B).
Handle is sticking to cartridge.	Accumulation of sediment in cartridge.	Remove handle (A) and all cycle timing washers (C) from cartridge (H). Secure handle back onto cartridge. After moving handle to the hot position, cycle faucet by pressing down on handle. Cycle faucet 12 times. Remove handle and replace timing washers.
Finish is spotting.	Elements in water supply may cause water staining on finish.	Clean finished trim area with a soft cloth using mild soap and water or a non-abrasive cleaner and then quickly rinse with water.

Notes: *1) Use caution not to damage piston quadring (H10) while servicing piston assembly (H6).
**2) Do not squeeze ends of spring (H12) causing spring to fully compress.

WARNING: This product can expose you to chemicals including lead, which is known to the state of California to cause cancer, birth defects, or other reproductive harm. For more information, go to www.P65Warnings.ca.gov.

